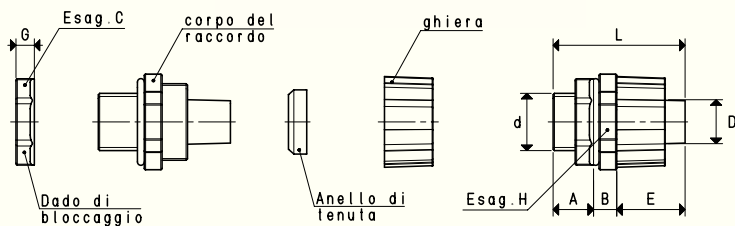


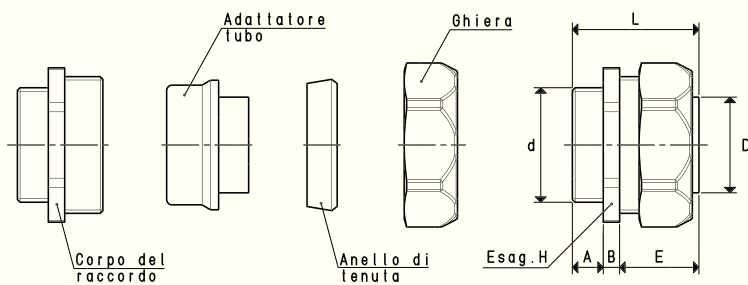
RACCORDI PER TUBI FLESSIBILI TPR



RACCORDI RTPR

| Art. | d Ø | A | B | C | D Ø | E | G | H | L | Materiale | Colore | Peso g |
|------------------|--------|------|------|----|--------|------|----|----|------|---------------|--------|-----------|
| RTPR 3/8" | G3/8" | 14.5 | 8.5 | 26 | 12.0 | 23.5 | 6 | 28 | 46.5 | polipropilene | grigio | 12 |
| RTPR 1/2" | G1/2" | 14.5 | 9.0 | 28 | 15.5 | 26.5 | 7 | 33 | 50.0 | polipropilene | grigio | 18 |
| RTPR 3/4" | G3/4" | 14.0 | 10.5 | 35 | 20.8 | 26.5 | 9 | 38 | 51.0 | polipropilene | grigio | 26 |
| RTPR 1" | G1" | 16.0 | 9.0 | 41 | 26.5 | 32.5 | 10 | 44 | 57.5 | polipropilene | grigio | 36 |

Temperatura di esercizio: -10° / +60 °C



RACCORDI RTPR

| Art. | d Ø | A | B | D Ø | E | H | L | Materiale | Peso g |
|--------------------|---------|----|---|--------|------|----|------|------------------|-----------|
| RTPR 1" 1/4 | G1" 1/4 | 11 | 6 | 34.5 | 28.5 | 52 | 45.5 | ottone nichelato | 340 |
| RTPR 1" 1/2 | G1" 1/2 | 14 | 7 | 39.5 | 34.0 | 60 | 55.0 | ottone nichelato | 530 |
| RTPR 2" | G2" | 14 | 7 | 50.0 | 33.0 | 74 | 54.0 | ottone nichelato | 596 |

Temperatura di esercizio: -20° / +60 °C

Sono disponibili i disegni 3D sul sito www.vuototecnica.net